

# Permobil Updater

## Instruction for external users

### Introduction

The **Permobil Updater** program is supporting the configuration tools for Permobil wheelchairs with R-net/ICS, VR2, VSI and Pilot+ wheelchair.

The *Permobil Updater* program will go out on Internet and look for and download new or updates of

*ICS-configfiles*

*Rnet Configfiles*

*Mobility Configfiles (Pilot+, VSI, VR2)*

*Wheelchair Builder*

*MagicDrive Touch Configurator*

*Instructions sheets and ICS/R-net related manuals* - you can select languages (for those that are translated)

The tool **Permobil PC-programmer for R-net** has to be downloaded and installed/updated with a separate installation file, refer to Appendix 1 in this document. Install this program before installing the Permobil Updater

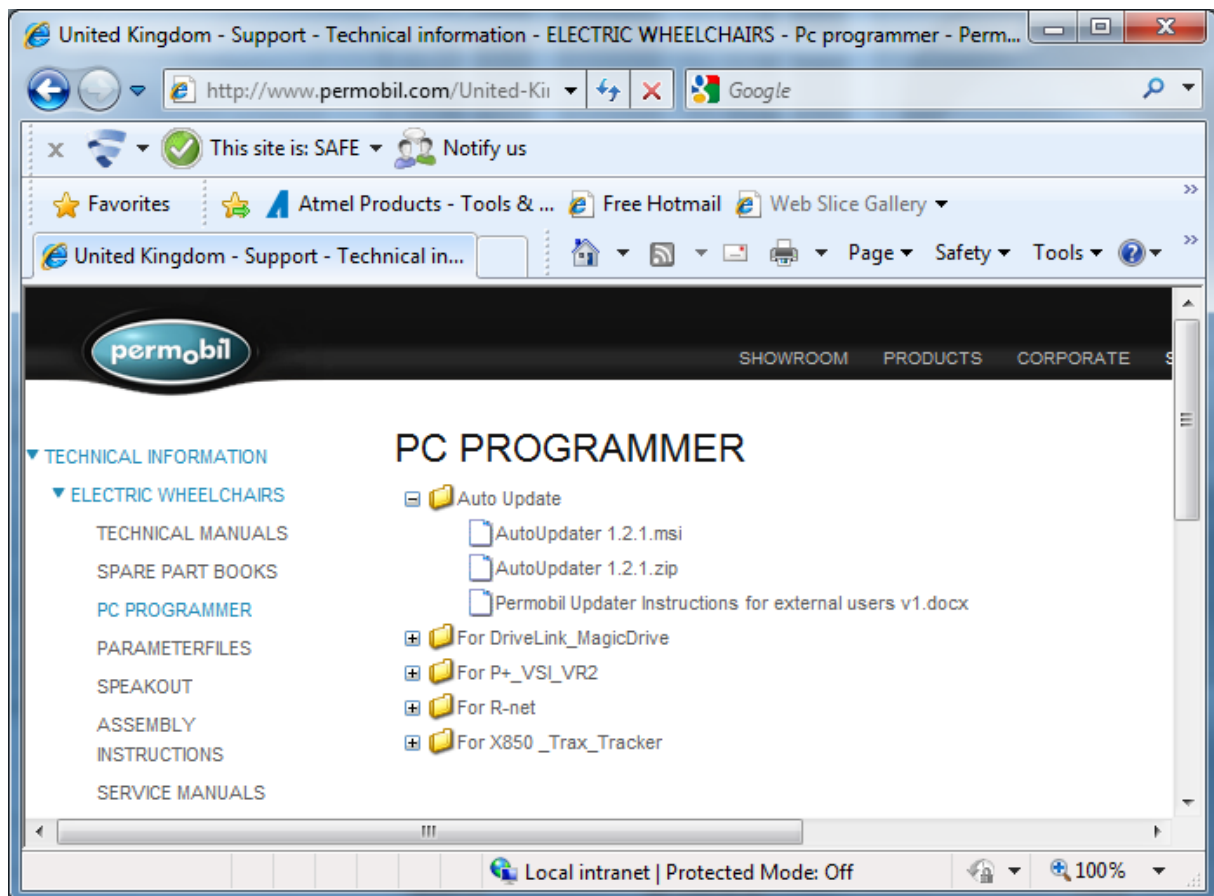
The tool **Permobil Mobility PC-programmer for VR2/VSI/Pilot+** has to be downloaded and installed/updated with a separate installation file, refer to Appendix 2 in this document. Install this program before installing the Permobil Updater.

The *Permobil Updater* program will automatically search for updates every morning at 8.00 or 9.00. It might be that this scheduler function does not work on all PC's . The program then has to be started manually, or manually set up to be started regularly from the Control Panel. Permobil do not guaranties that it works on all versions and configurations of operating systems.

### How to get and install PermobilUpdater

*To be able to install the PermobilUpdater you need to be able to be admin on your PC. Otherwise you need support from your local administrator/Support.*

The installation package AutoUpdater and this document is available under PC Programmer on Permobil web-site



Download the installation file PermobilUpdater.msi or PermobilUpdater.zip to your PC and start it by double click or unzip and double click.

If everything runs well the installation is now ready

### **Uninstall the following from Windows Control Panel**

Mobility\_ParameterFiles\_EU\_20090825 (or older)

R-net ConfigFiles\_EU\_20110427 (or older)

WBConfigFilesEU3.20110502 (or older)

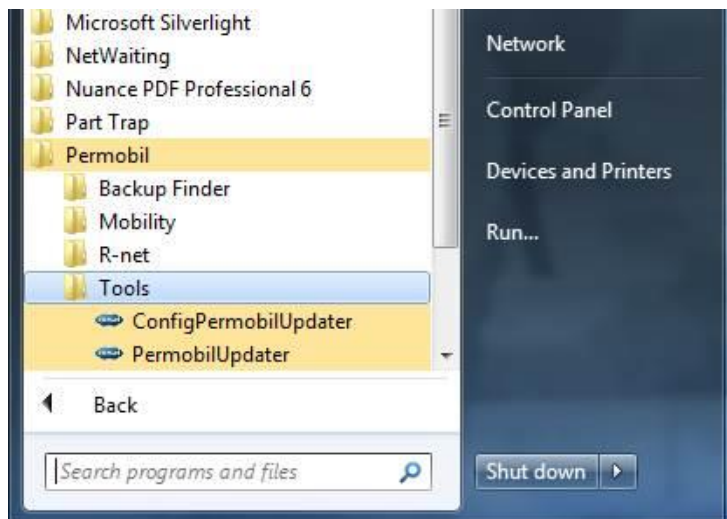
WB\_basic\_3.1.3651.msi (or lower version)

This is only necessary if you have these installations. If you don't do this you will have two Wheelchair builder installed (after PermobilUpdater has been run once).

**Note: The WheelchairBuilder has to have version 3.1.3862 or higher** to work properly.

### **What to do after installation**

Click open 'Start' - 'All Programs' – 'Permobil' – 'Tools'



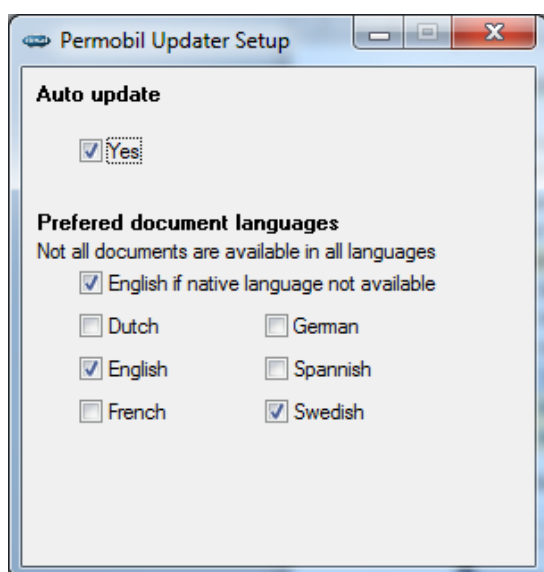
### Set documentation languages

Click on *ConfigPermobilUpdater* and then in the window as seen below, select the language(s) you want to get (when translation exists for that language).

The selection "English if native language not available" is marked by default, and it is recommended to keep it, or you will otherwise miss all documents that are only available in English.

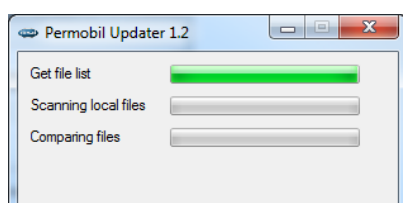
This has only to be done once, unless you want to change the setting.

If Auto update - yes is marked the program will automatically look for updates every morning.



Close window and click 'Start' - 'All Programs' - 'Permobil' - 'Tools' - 'PermobilUpdater'.

PermobilUpdater will now run and a window showing the progress will be shown, see below. The first time it will take at least 5 minutes to copy all files. Next time it will run faster.



## **General info:**

The *PermobilUpdater* will run every day at 8.00 or first time when getting in contact with internet after that. (For PC's with Windows XP it will only run at 9.00 and not automatically again that day if it was not connected to Internet). This provided that the conditions on your PC allowed the installation to set up this.

It is possible to manually run the update by clicking on PermobilUpdater in 'Start' - 'All Programs' – 'Permobil' – 'Tools' (see figure above)

All related programming tools and documentation can as before be started from 'Start' - 'All Programs' – 'Permobil'

### On PC's with Windows 7:

*Configfiles* (and Wheelchair Builder) are stored at C:\ProgramData\Permobil. (The ProgramData folder is a hidden folder and can't normally be seen from Explorer)

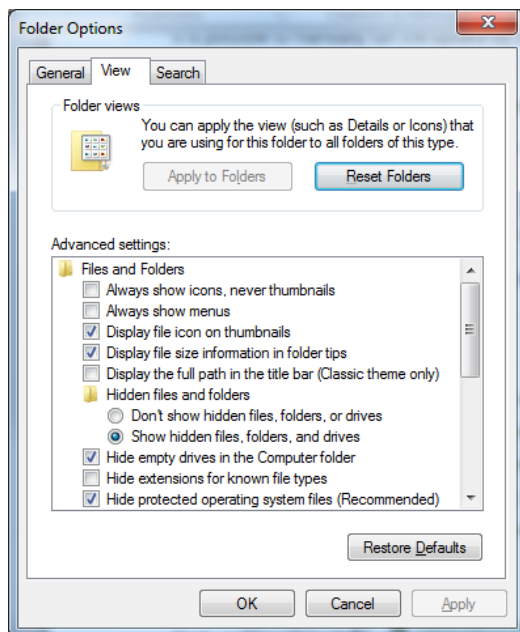
Wheelchair Builder, Rnet PC-programmer and Mobility PC-Programmer will automatically find the way to the folders were the actual configfiles are located when the program starts. So 'File' – 'Open' will show the relevant files directly.

*Back-up files* will by default in Windows7 be stored at:

C:\ProgramData\Permobil\WB2\Backupfolder	- for IC-files
C:\ProgramData\Permobil\R-net\BackupFolder	- for R-net files

(open files from WB or PC-programmer)

To be able to view the ProgramData folder you need to in 'Control Panel' – 'Folder Options' mark-up "Show hidden files, folders and drives" (se figure below)



On PC's with Windows XP:

*Configfiles* (and Wheelchair Builder) are stored at C:\Program Files\Permobil  
Wheelchair Builder, Rnet PC-programmer and Mobility PC-Programmer will automatically find the way to the folders where the actual configfiles are located when the program starts. So 'File' – 'Open' will show the relevant files directly.

*Back-up files* will by default in Windows XP be stored at:

C:\Program Files\Permobil\WB2\Backupfolder	- for IC-files
C:\Program Files\Permobil\R-net\BackupFolder	- for R-net files

When Permobil Updater is started from the scheduler it will run in the background and no PermobilUpdate window will be seen on Windows XP PC's.

## Appendix 1 Installation/Update of Permobil PC-programmer for R-net

**NOTE:** To be able to use the R-net PC-programmer is an R-net Dongle (Programming Key) needed. This dongle shall not be connected to the PC when installing the R-net PC-programmer.

*To be able to install the Permobil R-net PC-programmer you need to be able to be admin on your PC. Otherwise you need support from your local administrator/Support.*

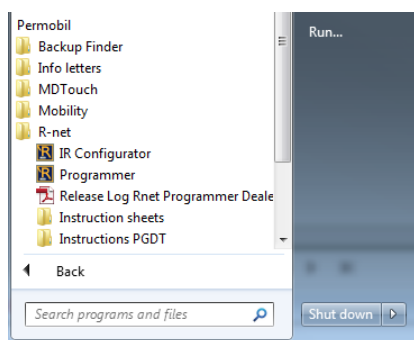
The installation package “R-net Dealer x.x.x.zip” is available under PC Programmer on Permobil web-site.



Download the installation file “R-net Dealer x.x.x.zip” (or similar name) to your PC, unzip and double click to start installation. After successful installation a shortcut is available on the Desktop.

Download also the “R-net Dongle Drivers – Certified” that might be needed for installation of drivers when the R-net dongle (programming key) is connected to the PC first time. Connect the R-Net Dongle and install drivers if needed by guiding to this driver folder when system looks for the driver.

After installation of also PermobilUpdater, the PC-programmer and instructions will be possible to access via 'Start' - 'All Programs' – 'Permobil' - 'R-net' menu as in figure below

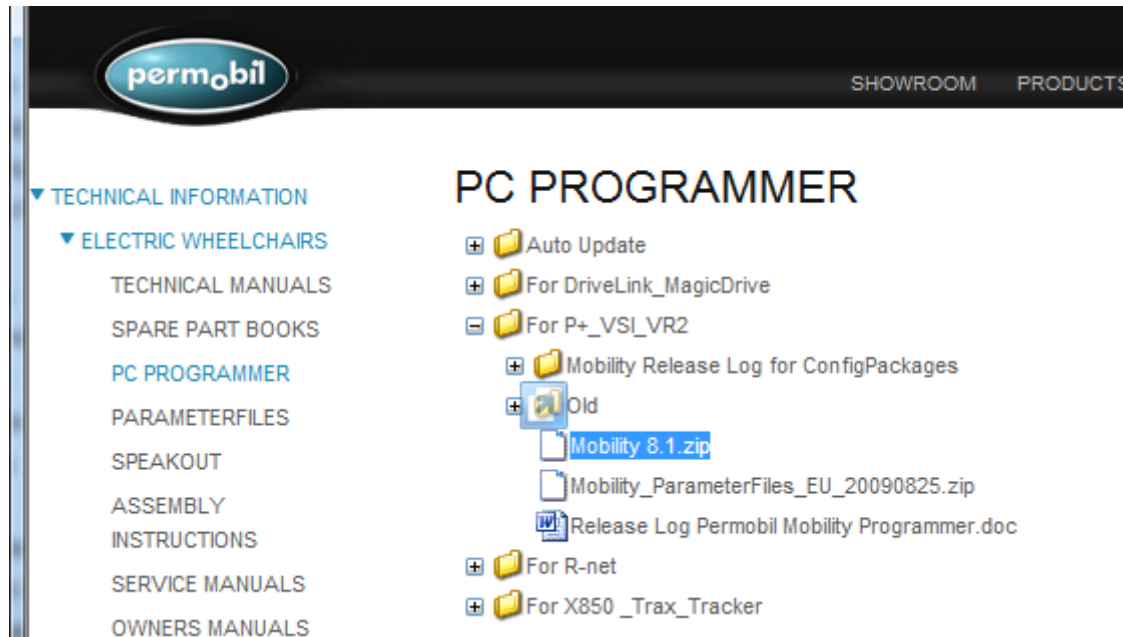


## Appendix 2

### Installation/Update of Permobil Mobility PC-programmer for VR2/VSI/Pilot+

*To be able to install the Permobil Mobility PC-programmer you need to be able to be admin on your PC. Otherwise you need support from your local administrator/Support.*

The installation package “Mobility x.x.zip” is available under PC Programmer on Permobil web-site.



Download the installation file “Mobility x.x.zip” (or similar name) to your PC, unzip and double click to start installation.

After successful installation a shortcut is available on the Desktop and the program and manual will be possible to access via  
'Start' - 'All Programs' – 'Permobil' - 'Mobility' menu as in figure below.

